

+81-9066592612, +91 95995 38333

knijapan.touroperations@gmail.com



KNI JAPAN



Explore

1674_12Days - Magical Japan Tour_JPY

📅 11 Nights / 12 Days

TOUR INCLUDES

All inclusive Super Deal Price

JPY **4,67,800/-**

Per Person Cost

DESCRIPTION

Min Group Size : 4

Explore the best of Japan on this **9-day tour** from Tokyo to Osaka. Visit Tokyo's top sights, enjoy **Mt. Fuji & Hakone**, and take a **day trip to Kamakura and Yokohama**. Travel to Kyoto by bullet train to see Arashiyama Bamboo Grove, Kinkakuji, Fushimi Inari, then continue to Osaka via Nara. Discover Osaka Castle, Umeda Sky Building, and Dotonbori, with free time for leisure before your departure.

TOUR ITINERARY



11 Nov, 25

Day 1 Osaka Arrival

Arrival Day

Arrive Kansai Airport and transfer to the hotel
Overnight at the Hotel



12 Nov, 25

Day 2

Full day Osaka Tour

Osaka Castle

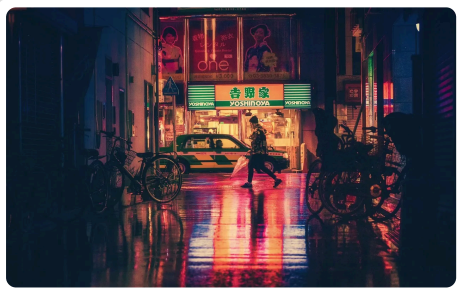
Visit the iconic **Osaka Castle**, a symbol of Japan's samurai history and architectural brilliance. Explore its sprawling grounds, beautiful gardens, and enjoy panoramic views from the castle tower.

Umeda Sky Building

Experience breathtaking city views from the **Umeda Sky Building's Floating Garden Observatory**. Its modern architecture and 360-degree vistas make it a must-see landmark in Osaka.

Osaka Aquarium (Kaiyukan)

Discover the fascinating marine world at **Osaka Aquarium (Kaiyukan)**, one of the largest in the world. See whale sharks, penguins, and colorful tropical fish in innovative, immersive exhibits.



13 Nov, 25

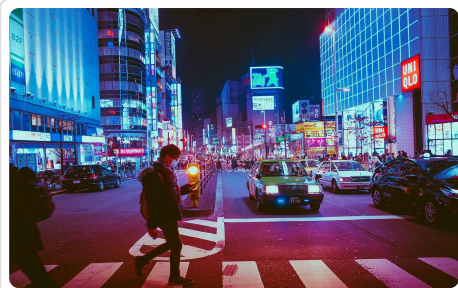
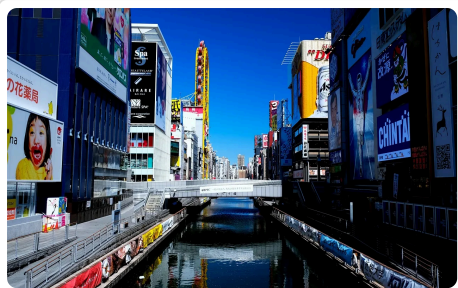
Day 3

Leisure Day at Your Own Pace

Spend the day at leisure and enjoy Japan at your own rhythm.

You can explore nearby attractions, try authentic Japanese cuisine, or relax.

Perfect time to make unforgettable memories at your own pace.



14 Nov, 25

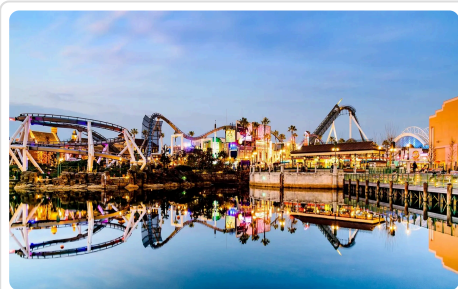
Day 4

Daytrip to Universal Studios

Enjoy a full day of excitement at Universal Studios Japan.

Experience thrilling rides, movie-themed attractions, and world-class entertainment.

Transfers are provided both ways, giving you a hassle-free day to explore at your own pace.



15 Nov, 25

Day 5

Kyoto, Nara & Osaka Heritage Tour

Nara Park

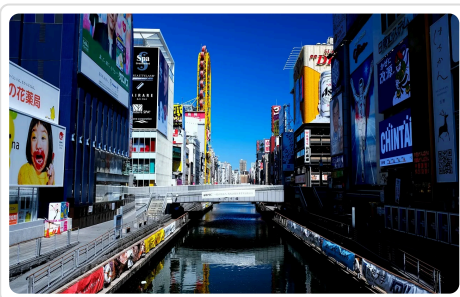
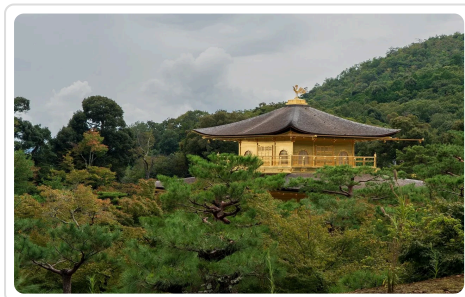
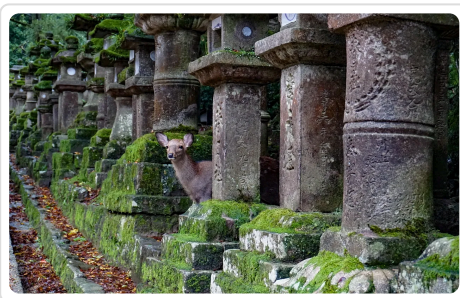
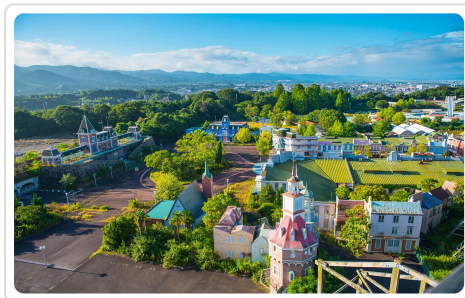
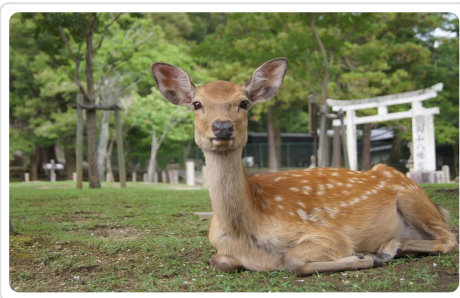
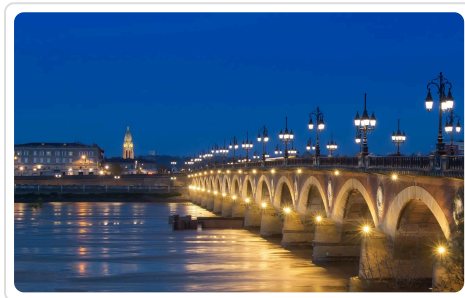
Stroll through **Nara Park**, famous for its friendly, free-roaming deer and scenic surroundings. The park provides a peaceful setting and excellent photo opportunities amidst historic temples.

Todai-ji Temple

Visit **Todai-ji Temple**, home to the world's largest bronze Buddha statue. This UNESCO World Heritage site showcases stunning architecture and offers insight into Japan's rich Buddhist heritage.

Dotonbori (Osaka)

Explore **Dotonbori**, Osaka's vibrant entertainment district. Enjoy the lively atmosphere, neon lights, and famous street food, making it a must-visit spot for local culture and culinary delights.



16 Nov, 25

Day 6

Full day city tour of Kyoto

Arashiyama Bamboo Grove

Walk through the enchanting **Arashiyama Bamboo Grove**, where towering bamboo stalks create a serene and otherworldly atmosphere. It's a perfect spot for photography and a peaceful escape from the city.

Togetsukyo Bridge

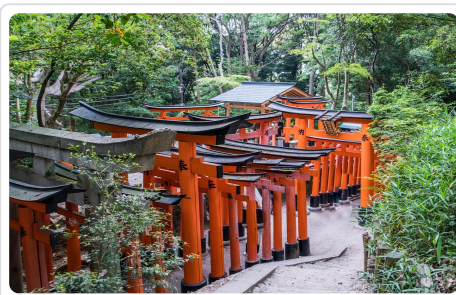
Visit **Togetsukyo Bridge**, a scenic landmark spanning the Katsura River in Arashiyama. Surrounded by mountains and seasonal foliage, it offers picturesque views and a relaxing riverside stroll.

Kinkakuji Temple

Explore **Kinkakuji**, the Golden Pavilion, renowned for its stunning gold leaf exterior and tranquil reflection in the surrounding pond. It's one of Kyoto's most iconic and photogenic temples.

Fushimi Inari Shrine

Discover **Fushimi Inari Shrine**, famous for its thousands of bright red torii gates forming winding trails up the mountain. It's a spiritual and visually striking experience, symbolizing prosperity and good fortune.



17 Nov, 25

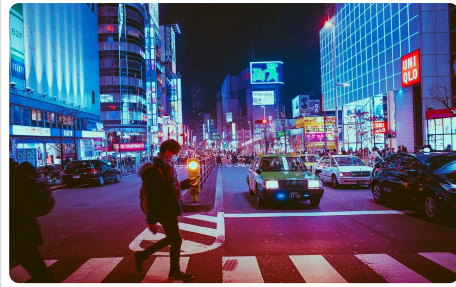
Day 7

Leisure Day at Your Own Pace

Spend the day at leisure and enjoy Japan at your own rhythm.

You can explore nearby attractions, try authentic Japanese cuisine, or relax.

Perfect time to make unforgettable memories at your own pace.



18 Nov, 25

Day 8

Kyoto to Tokyo Journey by Shinkansen

Board the high-speed bullet train for a seamless transfer from Kyoto to Tokyo.

Relax and enjoy the modern comfort and scenic countryside views.

Private transfers ensure a hassle-free experience throughout your journey.



19 Nov, 25

Day 9

Full day Tokyo city tour

Shinjuku Gyoen National Garden

A serene escape in the heart of Tokyo, Shinjuku Gyoen blends traditional Japanese, English, and French garden styles.

Stroll through beautiful landscapes, seasonal flowers, and tranquil ponds.

Perfect for a peaceful walk or photography enthusiasts.

Asakusa – Sensoji Kannon Temple

Tokyo's oldest and most famous Buddhist temple, Sensoji is dedicated to Kannon, the Goddess of Mercy.

Admire its majestic gate, vibrant temple grounds, and traditional architecture.

A cultural and spiritual highlight of the city.

Nakamise Shopping Street

A lively street leading to Sensoji Temple, filled with shops selling souvenirs, snacks, and traditional crafts.

Sample local treats like rice crackers and sweet mochi as you explore.

A perfect spot to pick up authentic Japanese keepsakes.

Tokyo Skytree

The tallest tower in Japan, offering panoramic views of Tokyo from its observation decks.

Enjoy breathtaking cityscapes, shopping, and dining in the tower complex.

A must-visit for stunning photography and skyline views.

Ginza Shopping Street

Tokyo's luxury shopping district, famous for high-end brands, stylish boutiques, and gourmet dining.

Stroll through its bustling streets and admire modern architecture.

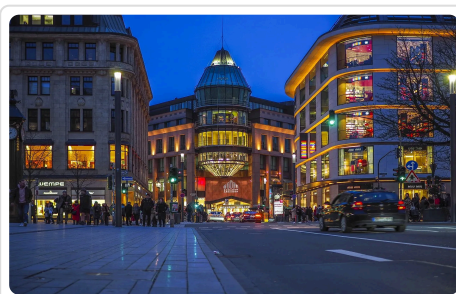
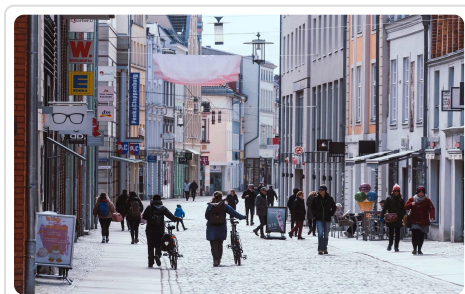
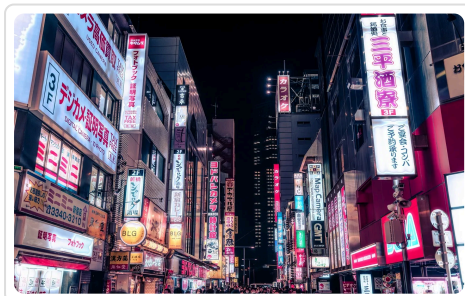
Ideal for fashion lovers and those seeking a premium shopping experience.

> Asakusa Sensoji Kannon Temple

> Nakamise Shopping Street

> Tokyo Skytree

> Ginza Shopping Street





20 Nov, 25

Day 10

Mt Fuji, Hakone, 1 Day Bus Trip from Tokyo

1. Lake Ashi

Lake Ashi, also called Ashinoko, is a scenic crater lake in Hakone surrounded by lush forests and mountains. Visitors can enjoy boat cruises that offer breathtaking views of Mount Fuji on clear days. The calm waters and serene environment make it perfect for photography and relaxation.

2. Sea Torii (Hakone Shrine Torii Gate)

The iconic red Torii gate stands majestically on the shores of Lake Ashi, symbolizing the entrance to Hakone Shrine. It offers a stunning backdrop for photos, especially when reflected on the lake. Many travelers come here to enjoy both its spiritual ambiance and scenic beauty.

3. Hakone Shrine

Nestled at the foot of Mount Hakone, Hakone Shrine is a historic Shinto shrine surrounded by towering cedar trees. Its peaceful pathways and traditional architecture make it a serene spiritual retreat. The shrine is famous for blessings and rituals, attracting visitors from all over Japan.

4. Hakone Pirate Ship

The Hakone Pirate Ship offers a fun and unique way to cruise Lake Ashi. Modeled like a European pirate vessel, it gives travelers panoramic views of the lake and surrounding mountains. It's a favorite for families, couples, and photography enthusiasts.

5. Hakone Ropeway

The Hakone Ropeway provides a thrilling aerial ride over volcanic valleys, mountains, and Lake Ashi. It connects key attractions such as Owakudani and Togendai, offering stunning vistas of Mount Fuji along the way. The ride is both scenic and exciting for all age groups.

6. Owakudani

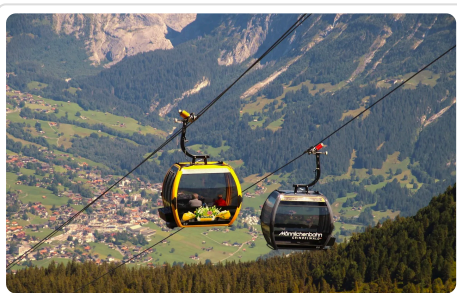
Owakudani, also known as the "Great Boiling Valley," is an active volcanic area with sulfur vents and hot springs. Visitors can taste the famous black eggs boiled in volcanic water, believed to add years to your life. The area offers unique landscapes and spectacular views of Mount Fuji.

7. Yamanakako

Lake Yamanaka (Yamanakako) is the largest of the Fuji Five Lakes, known for its calm waters and beautiful seasonal scenery. It's ideal for boating, cycling, and lakeside relaxation, with Mount Fuji providing a perfect backdrop. The area also hosts cultural festivals and seasonal flower displays.

8. Oshino Hakkai

Oshino Hakkai is a traditional village famous for its eight clear spring ponds fed by Mount Fuji's melted snow. The ponds are crystal clear, and the area preserves a nostalgic rural Japanese charm. Visitors can enjoy local delicacies, souvenirs, and tranquil walks around the ponds.



21 Nov, 25

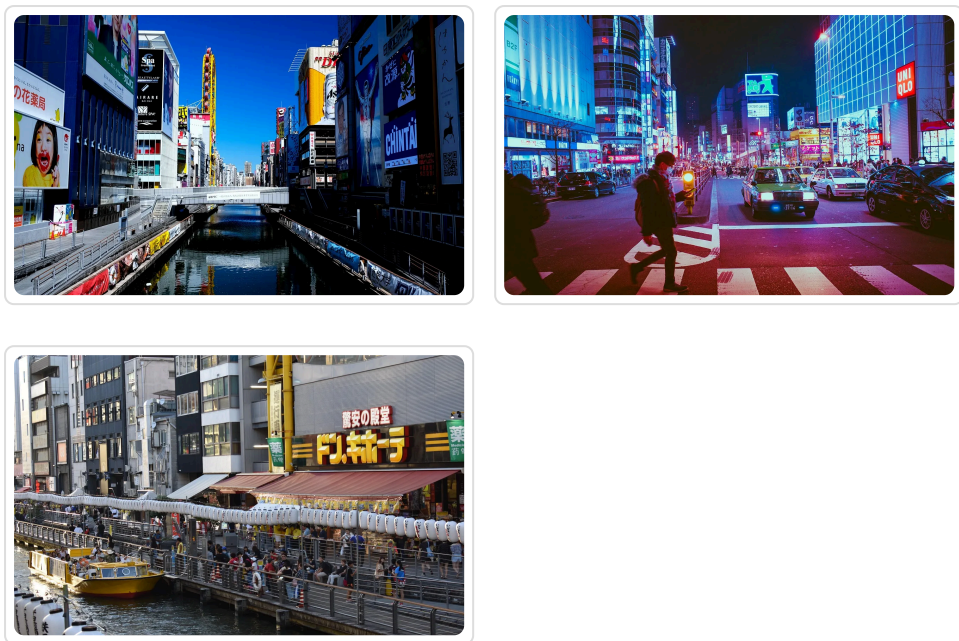
Day 11

Leisure Day at Your Own Pace

Spend the day at leisure and enjoy Japan at your own rhythm.

You can explore nearby attractions, try authentic Japanese cuisine, or relax.

Perfect time to make unforgettable memories at your own pace.

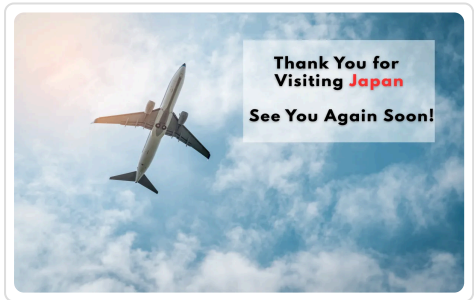


22 Nov, 25

Day 12

Last Day in Japan: Free & Easy

Spend your final hours in Japan at your own pace—shop, relax, or take a last stroll around the city. Later, transfer to the airport for your onward journey home.



Information & Documents

Inclusions:

| | |
|-------------------|---|
| Transportation | Private or SIC Vehicle wherever mentioned |
| Coordinator/Guide | English speaking driver cum guide |
| Hotel | 3* hotels as mentioned or similar |
| Meal | Breakfast – 11 |

| | |
|--------------|-----------------------------------|
| Room | Double /Twin rooms |
| Entrance | All Included as per the itinerary |
| Bullet Train | Kyoto-Tokyo |

Exclusions

- Any Gratuities
- Bank charges – YEN 4500
- Any Meals other than mentioned in itinerary
- Camera charges, water bottle or any expense of personal nature
- Pick up and drop not included for SIC tours
- Any transfer other than specified above
- Travel Insurance, Any Tips

Cancellation Policy

For Hotels Booking

Hotel rates are subject to a cancellation fee of 20% to 30% or higher, in accordance with the hotel's policy, once the tour booking is confirmed.

Tour Package Cancellation Policy

| | | |
|---|------|---------------------------------|
| Tour Confirmed Date to 30 Days prior to Travel Date | 15% | of Total amount of tour package |
| 30-21 Days prior to Travel date | 30% | of Total amount of tour package |
| 21-10 Days prior to travel date | 40% | of Total amount of tour package |
| 10-7 Days prior to travel date | 50% | of Total amount of tour package |
| 6 Days prior to travel date | 100% | of Total amount of tour package |

Hotels : We will provide hotels as per the below list

(incase of any particular hotel requested by agent/client, the rates may change)

Tokyo

3*

APA Hotel Sugamo Ekimae

Toyoko Inn hotels

Super Hotel Tokyo Otsuka/

Smile Hotel Asakusa/

Hotel Wing International Tokyo Akabane/ similar

Kyoto

3*

EN HOTEL Kyoto/

APA HOTEL KYŌTO-EKIMAE/

Daiwa Roynet Hotel Kyoto Ekimae PREMIER/similar

Osaka

3*

Toyoko Inn hotels

Comfort Hotel Shin-Osaka

Hotel Links Namba/

Hotel Hillarys/

Smile Hotel Shin-Osaka/ similar