

+81-9066592612, +91 95995 38333

knijapan.touroperations@gmail.com



KNI JAPAN



*Explore*

## 1651\_Explore 7Days in Japan\_JPY

6 Nights / 7 Days

TOUR INCLUDES



Transport

All inclusive Super Deal Price

JPY **3,54,900/-**

Per Person Cost

# DESCRIPTION

**Min Group Size : 4**

Your day begins with arrival at Narita or Haneda Airport, followed by a comfortable transfer to your hotel in Tokyo. Explore the capital on a full-day city tour covering the Imperial Palace, National Diet Building, Vasu Pujya Swami Jain Temple, Asakusa Sensoji Temple, Nakamise Street, and Tokyo Skytree. Continue your adventure with a day trip to Hakone and Mt. Fuji, visiting Lake Ashi, Owakudani Ropeway, Owakudani Valley, and Mt. Fuji's 5th Station (weather permitting). Travel to Osaka by bullet train and discover Osaka Castle, Umeda Sky Building, Dotonbori, and Shinsaibashi Market. Experience Kyoto and Nara with visits to Arashiyama Bamboo Grove, Kinkakuji Temple, Nara Deer Park, and Todai-ji Temple. Enjoy a day tour of Kobe featuring Suma Seaworld, Jain Temple, and the Earthquake Museum. Conclude your journey with a transfer to the airport, carrying unforgettable memories of Japan.

## TOUR ITINERARY



11 Nov, 25

### Day 1

#### Arrive Tokyo

Arrival Day!

Arrive Narita/Haneda Airport and transfer to the hotel

Overnight at the Hotel



12 Nov, 25

### Day 2

Full day Tokyo city tour



**Breakfast at hotel**

**Proceed for city sightseeing**

### **Imperial Palace (Drive-By)**

The Imperial Palace is the residence of Japan's Emperor and a symbol of Japanese history and tradition. Drive past its elegant gates and beautifully landscaped gardens while learning about its historical significance. Though entry is limited, the exterior views offer a glimpse of Japan's royal heritage.

### **National Diet Building (Drive-By)**

The National Diet Building houses Japan's parliament and stands as an architectural landmark in Tokyo. Admire its impressive façade and classic design while learning about Japan's political system during your drive-by. It's a perfect photo opportunity from the outside.

### **Vasu Pujya Swami Jain Temple**

A serene place of worship for the Jain community, this temple reflects peace, devotion, and exquisite architecture. Visitors can admire its intricate carvings, quiet ambiance, and the spiritual significance it holds for devotees. It's a unique cultural experience in the heart of Tokyo.

### **Asakusa Sensoji Kanon Temple**

Tokyo's oldest and most famous temple, Sensoji, is dedicated to Kanon, the goddess of mercy. Explore its stunning halls, ancient architecture, and the spiritual atmosphere that has drawn pilgrims for centuries. The temple is a must-visit for cultural and historical insights.

### **Nakamise Street**

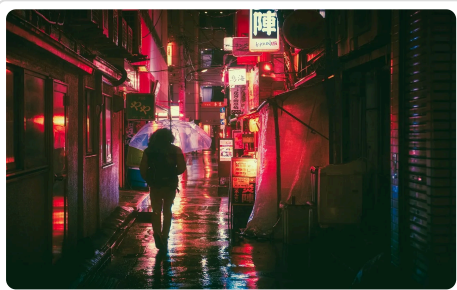
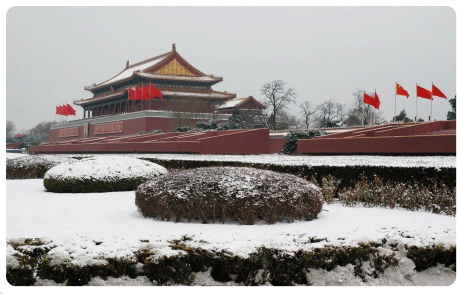
Leading up to Sensoji Temple, Nakamise Street is lined with colorful shops offering souvenirs, traditional snacks, and local crafts. Stroll through this lively street to soak in the vibrant atmosphere and pick up unique mementos of Tokyo.

### **Tokyo Skytree**

Standing as one of the tallest towers in the world, Tokyo Skytree offers panoramic views of the sprawling city below. Visit the observation decks to capture breathtaking cityscapes, especially beautiful at sunset or nighttime. It's a modern icon of Tokyo's skyline.

### **Overnight at the Hotel**

After a full day of sightseeing, relax at your hotel in Tokyo and recharge for the adventures ahead. Enjoy comfortable amenities and Japanese hospitality before your next day's journey.



13 Nov, 25

## Day 3

### Sameday Hakone and Mt Fuji Tour

#### **Lake Ashi Cruise**

Enjoy a scenic cruise on the tranquil **Lake Ashi**, surrounded by lush mountains and, on clear days, stunning views of Mt. Fuji. The serene waters and picturesque landscapes make it a perfect spot for photography and relaxation.

#### **Owakudani Ropeway**

Ride the **Owakudani Ropeway** for panoramic views of the volcanic valley, hot springs, and surrounding mountains. The cable car offers a thrilling experience and a bird's-eye perspective of Hakone's dramatic scenery.

#### **Owakudani Volcanic Valley**

Explore **Owakudani**, an active volcanic valley formed during the last eruption of Mount Hakone. Witness steaming vents, bubbling sulfuric hot springs, and the unique landscape shaped by volcanic activity.

#### **Mt. Fuji 5th Station (Upto 5th Station if weather permits)**

Reach the **5th Station of Mt. Fuji**, partway up Japan's iconic peak, offering breathtaking views of the surrounding landscape. Depending on weather conditions, enjoy photo opportunities, souvenir shops, and a taste of Japan's highest accessible point.

### Overnight at Hotel



14 Nov, 25

## Day 4

### ✈ ARRIVAL

### Tokyo-Osaka by Bullet Train

Breakfast at the hotel. Arrive and start Osaka city tour



### Osaka Castle

A symbol of Osaka's history and power, **Osaka Castle** impresses with its grand architecture, stone walls, and lush surrounding gardens. Inside, a museum showcases samurai artifacts and the city's fascinating past. The castle's top floor offers panoramic views of Osaka.



### Umeda Sky Building

The **Umeda Sky Building** is an iconic skyscraper featuring a floating observatory that provides 360° views of Osaka's skyline. Its unique design and open-air deck make it a must-visit spot for photography, especially at sunset.



### Dotonbori & Shinsaibashi Market

**Dotonbori** is Osaka's vibrant entertainment street, famous for neon lights, canal views, and street food like takoyaki and okonomiyaki. **Shinsaibashi Market**, nearby, is a shopper's paradise with trendy boutiques, local shops, and souvenirs — perfect for exploring the city's lively culture.

Check out the hotel





## Bullet train to Tokyo

Morning transfer to Osaka station and take a bullet train for Osaka. Arrive Osaka and transfer to hotel



15 Nov, 25

## Day 5

### Sameday tour of Kyoto and Nara

#### Arashiyama Bamboo Grove

Walk through the enchanting **Arashiyama Bamboo Grove**, where towering bamboo stalks create a serene and magical atmosphere. The gentle rustling of the leaves makes it a peaceful escape and one of Kyoto's most photographed spots.

#### Kinkakuji Temple

Also known as the **Golden Pavilion**, Kinkakuji Temple is famous for its stunning gold-covered exterior and beautifully landscaped gardens. Reflecting perfectly in the surrounding pond, it is a must-visit symbol of Kyoto's elegance and history.

#### Nara Deer Park

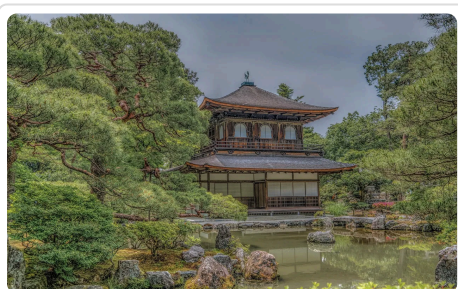
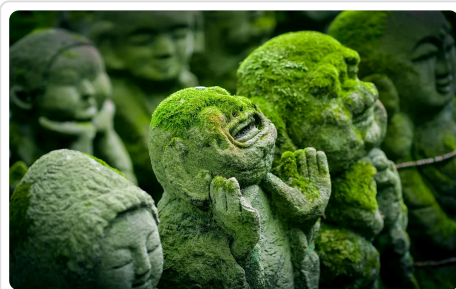
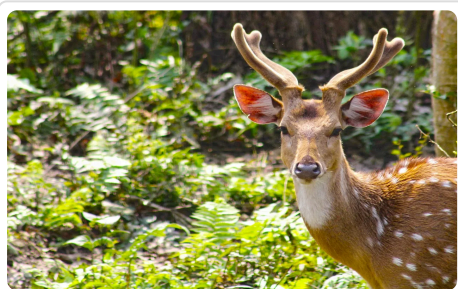
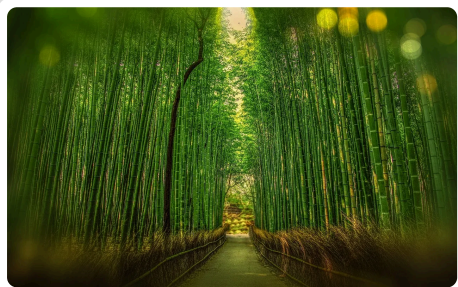


Home to hundreds of friendly, free-roaming deer, **Nara Deer Park** offers a unique wildlife experience. Visitors can feed the deer and enjoy strolling through the scenic park, surrounded by temples and historical landmarks.

### **Todai-ji Temple**

Famous for housing the massive bronze Buddha statue, **Todai-ji Temple** is a masterpiece of Buddhist architecture. Its grand wooden hall and serene surroundings make it one of Japan's most awe-inspiring and culturally significant sites.

#### Transfer to hotel



16 Nov, 25

## Day 6

### Sameday Kobe Tour

#### **Kobe Suma Seaworld**

Explore the underwater wonders at **Kobe Suma Seaworld**, featuring vibrant marine life, interactive exhibits, and exciting shows. It's a fun and educational destination for families and marine enthusiasts alike.

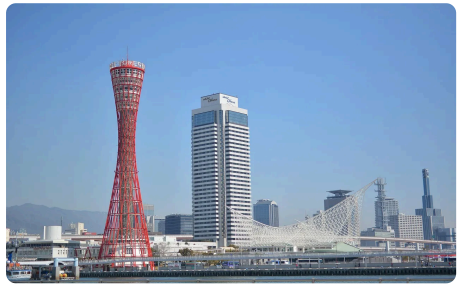
### **Jain Temple**

The **Jain Temple in Kobe** is a serene place of worship and devotion, showcasing exquisite architecture and intricate carvings. Visitors can admire its peaceful ambiance and learn about the Jain community's culture and traditions.

## **Earthquake Museum**

The **Earthquake Museum** offers a fascinating insight into Japan's seismic activity and disaster preparedness. Through interactive exhibits and real-life simulations, visitors can understand the science of earthquakes and safety measures in a hands-on way.

[Back to Osaka](#)



17 Nov, 25

## **Day 7 Bye Bye Japan**

### **Departure Day**

Transfer to airport to take your flight for onward journey



# Trip Information & Documents

## Terms & Condition

### Inclusions:

Transportation	Private or SIC Vehicle wherever mentioned
Coordinator/Guide	English speaking driver cum guide
Hotel	3* hotels as mentioned or similar
Meal	Breakfast – 7
Room	Double /Twin rooms
Entrance	All Included as per the itinerary
Bullet Train	Tokyo -Osaka

### Exclusions

- Any Gratuities
- Any Meals other than mentioned in itinerary
- Camera charges, water bottle or any expense of personal nature
- Pick up and drop not included for SIC tours
- Any transfer other than specified above
- Travel Insurance, Any Tips

### Cancellation Policy

#### For Hotels Booking

Hotel rates are subject to a cancellation fee of 20% to 30% or higher, in accordance with the hotel's policy, once the tour booking is confirmed.

#### Tour Package Cancellation Policy

Tour Confirmed Date to 30 Days prior to Travel Date	15%	of Total amount of tour package
30-21 Days prior to Travel date	30%	of Total amount of tour package
21-10 Days prior to travel date	40%	of Total amount of tour package
10-7 Days prior to travel date	50%	of Total amount of tour package
6 Days prior to travel date	100%	of Total amount of tour package

**Hotels : We will provide hotels as per the below list**

**(incase of any particular hotel requested by agent/client, the rates may change)**

## **Tokyo**

**3\***

APA Hotel Sugamo Ekimae

Toyoko Inn hotels

Super Hotel Tokyo Otsuka/

Smile Hotel Asakusa/

Hotel Wing International Tokyo Akabane/ similar

## **Osaka**

**3\***

Toyoko Inn hotels

Comfort Hotel Shin-Osaka

Hotel Links Namba/

Hotel Hillarys/

Smile Hotel Shin-Osaka/ similar