

+81-9066592612, +91 95995 38333

knijapan.touroperations@gmail.com



KNI JAPAN



Explore

1523_11Days - Amazing Japan Tour_JPY

 10 Nights / 11 Days

TOUR INCLUDES

All inclusive Super Deal Price

JPY **4,34,500/-**


Per Person Cost

DESCRIPTION

Min Group Size : 4

Experience the best of Japan with this exciting tour covering Tokyo, Mt. Fuji, Hakone, Kyoto, Nara, and Osaka. Begin your journey with arrival at Narita Airport and transfer to your hotel. Enjoy a full-day Tokyo city tour visiting highlights like the Imperial Palace, Asakusa Sensoji Temple, Tokyo Skytree, and Rainbow Bridge. Continue with a scenic Mt. Fuji and Hakone excursion featuring Mt. Fuji 5th Station, Lake Ashi Cruise, Hakone Ropeway, and Owakudani Valley. Spend a fun-filled day at Tokyo Disneyland, followed by leisure time for shopping. Travel to Kyoto by bullet train and explore the city's cultural treasures, including Kinkakuji Temple, Arashiyama Bamboo Grove, Fushimi Inari Shrine, and Nishiki Market. Journey onward to Osaka via Nara, visiting Nara Park and Todai-ji Temple, then explore Osaka Castle and Dotonbori. Enjoy a day at Universal Studios Japan and some free time for shopping before your departure, marking the perfect end to a memorable Japan adventure with KNI Japan.

TOUR ITINERARY


 11 Nov, 25

Day 1

Arrival Day

Arrive Narita/Haneda Airport and transfer to the hotel
Overnight at the Hotel



 12 Nov, 25

Day 2

Full day Tokyo City Tour

Depart from Hotel

National Diet Building (Drive-by):

Japan's parliament building, an iconic structure in Tokyo, admired for its grand architecture. A quick drive-by view of this political landmark.

Imperial Palace (Photo Stop):

The residence of Japan's Emperor surrounded by beautiful gardens and moats. A perfect spot for memorable photos.

Asakusa Sensoji Kanon Temple (Visit):

Tokyo's oldest and most famous Buddhist temple, dedicated to Kannon, the Goddess of Mercy. A place rich in culture and tradition.

Nakamise Shopping Street (Stroll):

A lively shopping street leading to Sensoji Temple, filled with local snacks, souvenirs, and traditional crafts.

Lunch Break (Own):

Free time to enjoy lunch at your own choice of restaurant, with many local and international options available.

Tokyo Skytree:

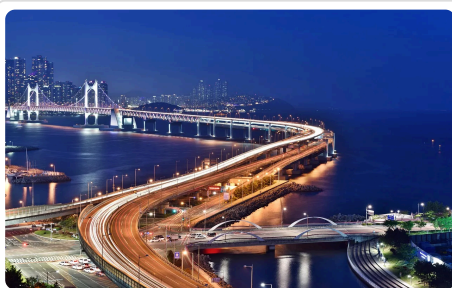
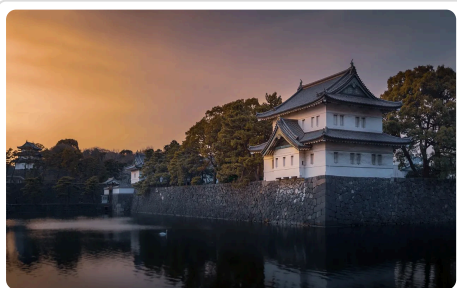
One of the tallest towers in the world offering breathtaking views of Tokyo's skyline and beyond. A symbol of modern Japan.

Rainbow Bridge (Scenic Drive):

A stunning suspension bridge connecting central Tokyo to Odaiba, beautifully lit up in the evening. Enjoy the scenic waterfront views.

Drop & Pickup at Shibuya Return to Hotel

End of the Tour





13 Nov, 25

Day 3

Sameday Hakone and Mt Fuji Tour

Proceed for sightseeing,

Lake Ashi & Sea Torii

Sail across the stunning Lake Ashi with Mount Fuji on the horizon and the iconic red Sea Torii rising from the water. A perfect blend of nature, culture, and spirituality, this view is Hakone's most enchanting scene.

Hakone Shrine

Walk through ancient cedar forests to the sacred Hakone Shrine, famous for its grand torii gates on the lake. Peaceful, spiritual, and picture-perfect; this shrine is a must for both culture lovers and photographers.

Hakone Pirate Ship

Set sail on Lake Ashi aboard a grand "Pirate Ship" for a one-of-a-kind cruise. Enjoy sweeping views of mountains, forests, and Fuji: an adventure as fun as it is scenic.

Hakone Ropeway

Glide above volcanic valleys and rolling greenery on the Hakone Ropeway. Spot Mount Fuji, steaming sulphur vents, and even taste the famous "black eggs" of Owakudani for good luck!

Owakudani

Step into Hakone's "Valley of Hell," with its dramatic sulphur vents, bubbling springs, and panoramic Fuji views. Try the local black eggs, said to add years to your life!

Mt. Fuji 5th Station (Upto 5th Station If weather permit)

Proceed to Tokyo

Overnight at Hotel

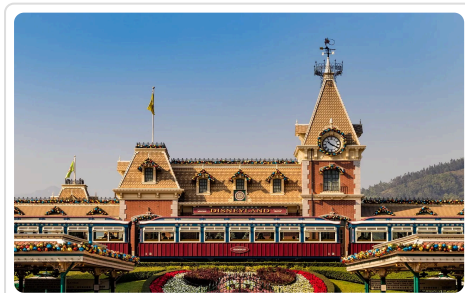
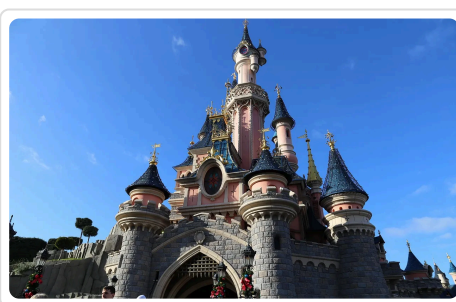


14 Nov, 25

Day 4

Daytrip to Disneyland -Tickets only

Enjoy a magical day at Tokyo Disneyland with a regular pass, exploring its enchanting rides, shows, and themed attractions. Private transfers ensure a comfortable and hassle-free journey to and from the park. Spend the day creating unforgettable memories with family and friends in this world-famous theme park. Return to your hotel in the evening for a relaxing overnight stay.



15 Nov, 25

Day 5

Day free for shopping

Enjoy a leisurely day at your own pace with a free day dedicated to shopping. Explore local markets, boutiques, and malls to find unique souvenirs, fashion, and gifts. Take your time to soak in the city's vibe while discovering hidden gems. Return to your hotel in the evening for a relaxing stay.



16 Nov, 25

Day 6

Shinkansen Adventure: Tokyo to Kyoto

Transfer to Tokyo Station and board the bullet train to Kyoto, experiencing Japan's world-famous high-speed rail journey. Upon arrival, meet your guide and proceed to the hotel for check-in. Spend the evening relaxing or exploring the nearby attractions at your own pace. Overnight stay at the hotel in Kyoto.



17 Nov, 25

Day 7

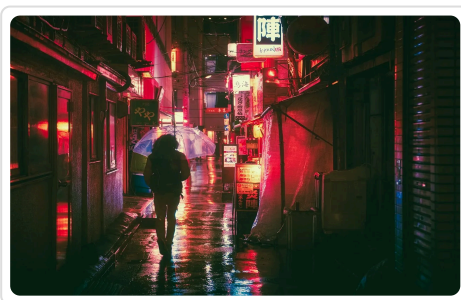
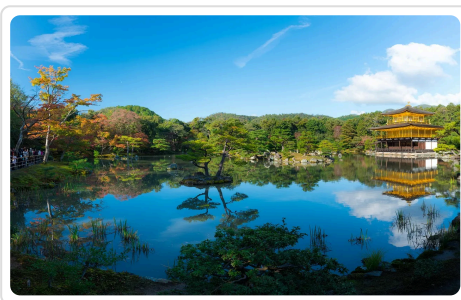
Full day Kyoto tour

Kinkaku-ji Temple: Visit the stunning Golden Pavilion, a Zen Buddhist temple covered in gold leaf, set amidst serene gardens and a reflective pond. Capture picturesque views and learn about its rich history.

Arashiyama Bamboo Grove: Walk through the enchanting bamboo forest in Arashiyama, where towering stalks create a peaceful and photogenic atmosphere. Experience the calm and natural beauty of this iconic Kyoto spot.

Fushimi Inari Shrine: Explore the famous Shinto shrine known for its thousands of vibrant red torii gates winding up the hillside. Enjoy a spiritual walk and take in panoramic views along the trails.

Nishiki Market: Discover Kyoto's bustling market, full of local delicacies, fresh produce, and unique souvenirs. Sample traditional snacks and immerse yourself in the city's culinary culture.



18 Nov, 25

Day 8

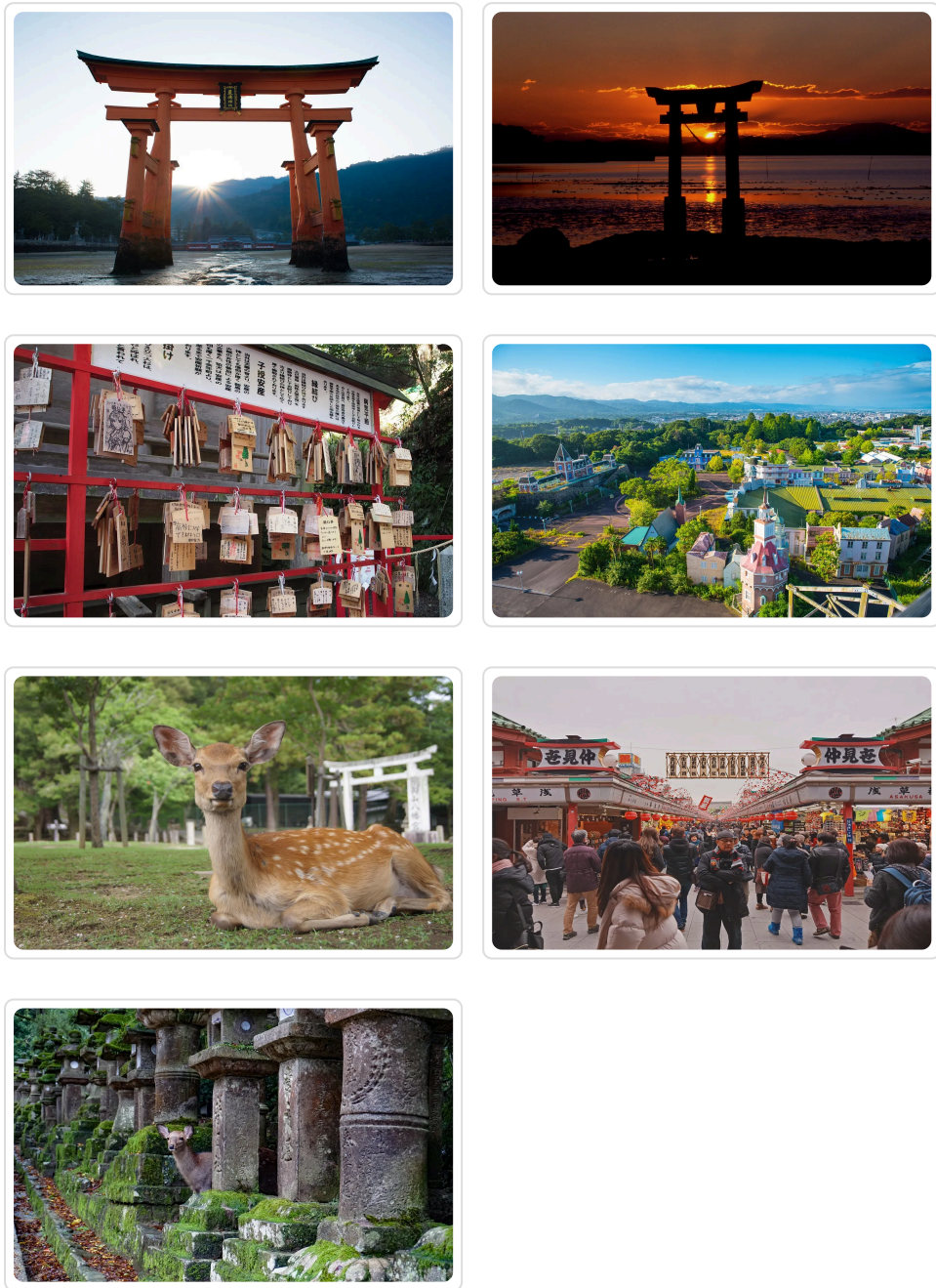
Kyoto>Nara>Osaka By Road

Nara Park: Stroll through Nara Park, home to freely roaming friendly deer, and enjoy the serene natural surroundings. Capture memorable photos with these iconic animals in a peaceful setting.

Todai-ji Temple: Visit the magnificent Todai-ji Temple, housing the world's largest bronze Buddha statue. Admire the impressive architecture and learn about its historical and cultural significance.

Kasuga Shrine: Explore the beautifully preserved Kasuga Shrine, famous for its hundreds of stone and bronze lanterns. Experience the spiritual ambiance and traditional Japanese Shinto architecture.

After the Nara tour, proceed to Osaka and check in at your hotel for an overnight stay.



19 Nov, 25
Day 9

Daytrip to Universal Studios - Tickets only (regular pass)

Enjoy a thrilling day at Universal Studios Japan with a regular pass, featuring world-class rides and entertainment. Explore themed zones like The Wizarding World of Harry Potter and Minion Park.

Transfers are on your own.



20 Nov, 25

Day 10

Day free for shopping

Enjoy a leisurely day at your own pace with a free day dedicated to shopping. Explore local markets, boutiques, and malls to find unique souvenirs, fashion, and gifts. Take your time to soak in the city's vibe while discovering hidden gems. Return to your hotel in the evening for a relaxing stay.



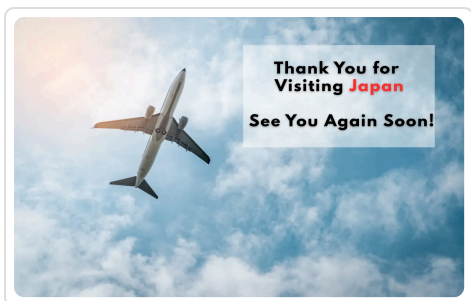
21 Nov, 25

Day 11

Final day in Japan

Departure day!

Free till departure



Information & Documents

Inclusions:

Transportation	Private or SIC Vehicle wherever mentioned
Coordinator/Guide	English speaking driver cum guide
Hotel	3* hotels as mentioned or similar
Meal	Breakfast – 10
Room	Double /Twin rooms
Entrance	All Included as per the itinerary
Bullet Train	Tokyo-Kyoto

Exclusions

- Any Gratuities
- Bank charges – YEN 4500
- Any Meals other than mentioned in itinerary
- Camera charges, water bottle or any expense of personal nature
- Pick up and drop not included for SIC tours
- Any transfer other than specified above
- Travel Insurance, Any Tips

Cancellation Policy

For Hotels Booking

Hotel rates are subject to a cancellation fee of 20% to 30% or higher, in accordance with the hotel's policy, once the tour booking is confirmed.

Tour Package Cancellation Policy

Tour Confirmed Date to 30 Days prior to Travel Date	15% of Total amount of tour package
--	--

30-21 Days prior to Travel date	30%	of Total amount of tour package
21-10 Days prior to travel date	40%	of Total amount of tour package
10-7 Days prior to travel date	50%	of Total amount of tour package
6 Days prior to travel date	100%	of Total amount of tour package

**Hotels : We will provide hotels as per the below list
(incase of any particular hotel requested by agent/client, the rates may change)**

Tokyo

3*

Toyoko Inn hotels
 APA Hotel Sugamo Ekimae
 Super Hotel Tokyo Otsuka/
 Smile Hotel Asakusa/
 Hotel Wing International Tokyo Akabane/ similar

Kyoto

3*

APA Hotels
 EN HOTEL Kyoto/
 APA HOTEL KYŌTO-EKIMAE/
 Daiwa Roynet Hotel Kyoto Ekimae PREMIER/similar

Osaka

3*

Toyoko Inn hotels
 Comfort Hotel Shin-Osaka
 Hotel Links Namba/
 Hotel Hillarys/
 Smile Hotel Shin-Osaka/ similar