

+81-9066592612, +91 95995 38333

knijapan.touroperations@gmail.com



KNI JAPAN



*Explore*

## 1510\_8Days - Japan Heritage & Harmony Tour\_JPY

7 Nights / 8 Days

TOUR INCLUDES

All inclusive Super Deal Price

JPY **2,54,200/-**

Per Person Cost

# DESCRIPTION

Min Group Size : 4

Experience the **Essence of Japan** with this beautifully crafted tour covering Tokyo, Mt. Fuji, Hakone, Kyoto, Nara, and Osaka. Begin your journey with arrival at Narita Airport and transfer to your hotel. Discover the charm of Tokyo on a half-day Hato Bus tour, visiting its top highlights, with the afternoon free for personal exploration. Enjoy a full-day excursion to Mt. Fuji and Hakone, featuring Lake Ashi, Hakone Shrine, the Pirate Ship Cruise, Hakone Ropeway, Owakudani Valley, Yamanakako, and Oshino Hakkai. Travel from Tokyo to Kyoto by bullet train, with the rest of the day free to relax. Explore Kyoto and Nara on a same-day tour, visiting Kinkaku-ji Temple, Arashiyama Bamboo Grove, and Nara Park. Continue your journey to Osaka by private vehicle and settle into your hotel. Enjoy a free day for shopping or independent sightseeing in Osaka before departing Japan with wonderful memories of its culture, nature, and timeless beauty.

## TOUR ITINERARY



11 Nov, 25

### Day 1 Tokyo Arrival

#### Arrival Day

Arrive Narita/Haneda Airport and transfer to the hotel  
Overnight at the Hotel



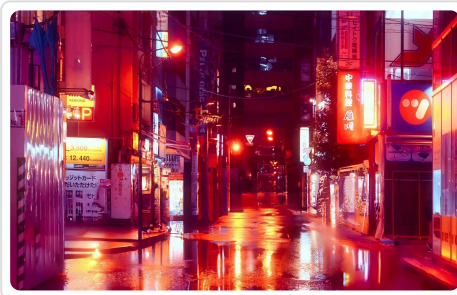
12 Nov, 25

### Day 2

Half-day Tokyo Tour by Hato Bus (Morning Tour)



Start your day with a **half-day Tokyo sightseeing tour** on the famous Hato Bus. Visit iconic city highlights while enjoying a comfortable guided ride and informative commentary. In the afternoon, explore **Tokyo at your own pace**, whether shopping, visiting cafes, or strolling through the city streets. This tour offers a perfect blend of guided sightseeing and personal freedom.



13 Nov, 25

## Day 3

### Mt. Fuji & Hakone Explorer

#### Breakfast at Hotel

Start your day with a delicious breakfast at the hotel to energize for a full day of sightseeing and scenic adventures.

#### Mt. Fuji 5th Station (Weather Permitted)

Visit the iconic **Mt. Fuji 5th Station**, where you can enjoy panoramic views of the surrounding mountains and valleys. Note that access depends on weather conditions.

#### Hakone Sightseeing Tour

Explore the scenic beauty of **Hakone**, including a **Lake Ashi Cruise** from Hakone Machiko to Tondenai, taking in the serene lake and surrounding mountains.

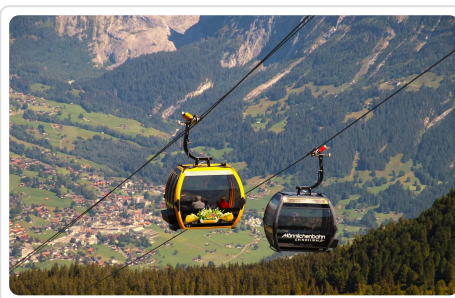
#### Hakone Ropeway & Owakudani Volcanic Valley

Ride the **Hakone Ropeway** for spectacular aerial views and visit **Owakudani**, a volcanic valley

famous for its hot springs and unique landscapes.

### Drop to Hotel in Shizuoka

After an eventful day, transfer to your hotel in **Shizuoka** for a relaxing overnight stay.



14 Nov, 25

## Day 4

### Tokyo to Kyoto by bullet train

Travel from Tokyo to Kyoto aboard the high-speed bullet train, experiencing Japan's efficient and comfortable rail journey. Upon arrival, make your own transfer to the hotel and check in. Enjoy the rest of the day at leisure to relax or explore Kyoto at your own pace.





15 Nov, 25

## Day 5

### Kyoto, Nara & Osaka Heritage Tour

#### Nara Park

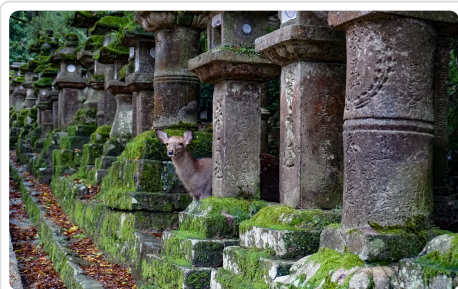
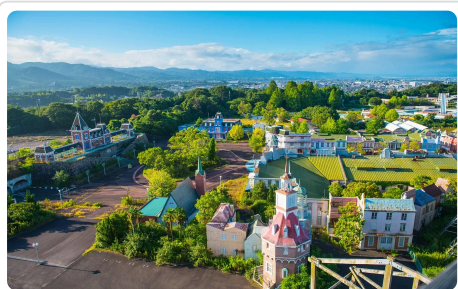
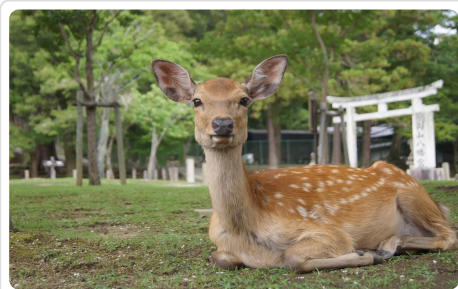
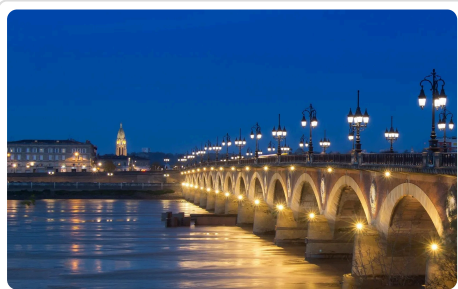
Stroll through **Nara Park**, famous for its friendly, free-roaming deer and scenic surroundings. The park provides a peaceful setting and excellent photo opportunities amidst historic temples.

#### Todai-ji Temple

Visit **Todai-ji Temple**, home to the world's largest bronze Buddha statue. This UNESCO World Heritage site showcases stunning architecture and offers insight into Japan's rich Buddhist heritage.

#### Dotonbori (Osaka)

Explore **Dotonbori**, Osaka's vibrant entertainment district. Enjoy the lively atmosphere, neon lights, and famous street food, making it a must-visit spot for local culture and culinary delights.





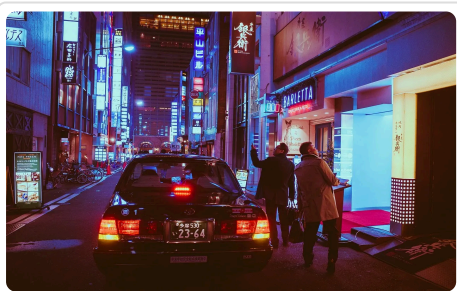


16 Nov, 25

## Day 6

### Kyoto>Osaka with Private Vehicle

Travel from Kyoto to Osaka comfortably in a private vehicle, enjoying a smooth and scenic journey. Relax as you pass through charming cityscapes and countryside views. Upon arrival in Osaka, check in at your hotel and unwind after your journey. The rest of the day is free for leisure or exploring nearby attractions.

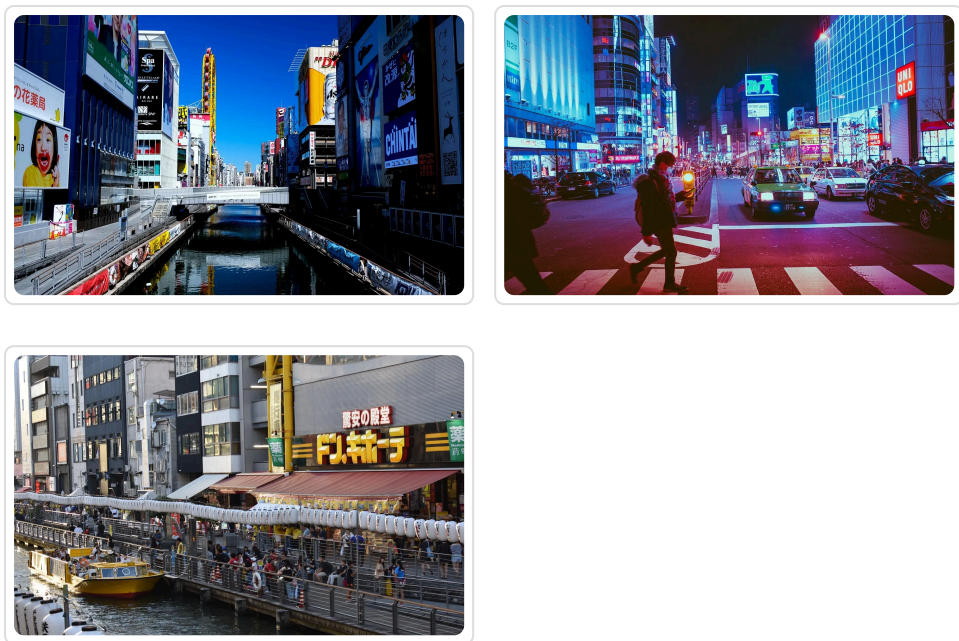


17 Nov, 25

## Day 7

### Leisure Day at Your Own Pace

Spend the day at leisure and enjoy Japan at your own rhythm. You can explore nearby attractions, try authentic Japanese cuisine, or relax. Perfect time to make unforgettable memories at your own pace.

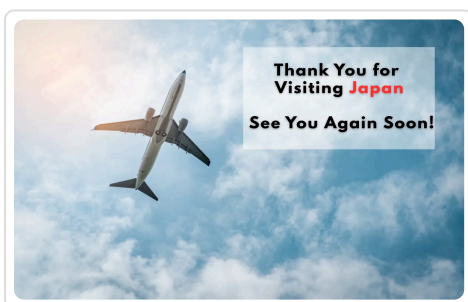


18 Nov, 25

## Day 8

### Leisure Day at Your Own Pace

On your **departure day**, enjoy free time to relax, shop, or explore the city at your own pace. Make the most of your final moments in Japan before your transfer to the airport. Convenient transfers ensure a smooth and stress-free journey to catch your flight.



### Information & Documents

#### Inclusions:

Transportation

Private or SIC Vehicle wherever mentioned

Coordinator/Guide

English speaking driver cum guide

Hotel

3\* hotels as mentioned or similar

Meal

Breakfast – 7

|              |                                   |
|--------------|-----------------------------------|
| Room         | Double /Twin rooms                |
| Entrance     | All Included as per the itinerary |
| Bullet Train | Tokyo >Kyoto                      |

## Exclusions

- Any Gratuities
- Bank charges – YEN 4500
- Any Meals other than mentioned in itinerary
- Camera charges, water bottle or any expense of personal nature
- Pick up and drop not included for SIC tours
- Any transfer other than specified above
- Travel Insurance, Any Tips

## Cancellation Policy

### For Hotels Booking

Hotel rates are subject to a cancellation fee of 20% to 30% or higher, in accordance with the hotel's policy, once the tour booking is confirmed.

### Tour Package Cancellation Policy

|   |      |                                 |
|---|------|---------------------------------|
| Tour Confirmed Date to 30 Days prior to Travel Date | 15%  | of Total amount of tour package |
| 30-21 Days prior to Travel date                     | 30%  | of Total amount of tour package |
| 21-10 Days prior to travel date                     | 40%  | of Total amount of tour package |
| 10-7 Days prior to travel date                      | 50%  | of Total amount of tour package |
| 6 Days prior to travel date                         | 100% | of Total amount of tour package |

**Hotels : We will provide hotels as per the below list**

**(incase of any particular hotel requested by agent/client, the rates may change)**

### Tokyo

**3\***

Toyoko Inn hotels

APA Hotel Sugamo Ekimae

Super Hotel Tokyo Otsuka/

Smile Hotel Asakusa/

Hotel Wing International Tokyo Akabane/ similar



## **Kyoto**

**3\***

EN HOTEL Kyoto/

APA HOTEL KYŌTO-EKIMAE/

Daiwa Roynet Hotel Kyoto Ekimae PREMIER/similar

## **Osaka**

**3\***

Toyoko Inn hotels

Comfort Hotel Shin-Osaka

Hotel Links Namba/

Hotel Hillarys/

Smile Hotel Shin-Osaka/ similar