

+81-9066592612, +91 95995 38333

knijapan.touroperations@gmail.com



KNI JAPAN



Explore

1009_9Day_From Temples to Towers_JPY

8 Nights / 9 Days

TOUR INCLUDES

All inclusive Super Deal Price

JPY **3,27,000/-**


Per Person Cost

DESCRIPTION

Min Group Size : 4

Discover the best of Japan on a **9-day adventure** that takes you from the temples to the modern metropolis of **Tokyo to Kyoto**. Explore ancient temples, serene gardens, and traditional towns while enjoying Japan's blend of history, culture, and innovation. From bustling cityscapes and iconic landmarks to peaceful shrines and scenic landscapes, this journey offers an unforgettable glimpse into the essence of Japan.

TOUR ITINERARY


 11 Nov, 25

Day 1

Arrive Tokyo

Arrive Narita / Haneda Airport and transfer to the hotel
Overnight at the Hotel



 12 Nov, 25

Day 2

Full-day Tokyo Tour by coach

Shinjuku Skyscrapers (Drive by)

Admire Tokyo's impressive skyline as you pass through Shinjuku, home to some of Japan's tallest buildings and vibrant city life. The district beautifully blends modern architecture with entertainment, shopping, and business centers.

Meiji Shinto Shrine

A peaceful oasis in the heart of Tokyo, Meiji Shrine is dedicated to Emperor Meiji and Empress Shoken. Surrounded by lush forest, it offers a glimpse into Japan's spiritual traditions and serene beauty.

National Stadium (Drive by)

Drive past Japan's iconic National Stadium, the centerpiece of the Tokyo 2020 Olympics. Its stunning architecture symbolizes Japan's innovation and cultural heritage.

Imperial Palace Plaza

Visit the Imperial Palace Plaza, surrounded by moats, bridges, and scenic gardens. It's a perfect photo spot and a symbol of Japan's royal legacy.

Odaiba & Rainbow Bridge

Cross the dazzling Rainbow Bridge to Odaiba, a futuristic entertainment island filled with shopping, attractions, and waterfront views. Enjoy the skyline and Tokyo Bay scenery.

Odaiba – Free Time

Spend some leisure time exploring Odaiba's attractions — from shopping malls and entertainment centers to seaside parks and panoramic views of the city.

Lunch Time

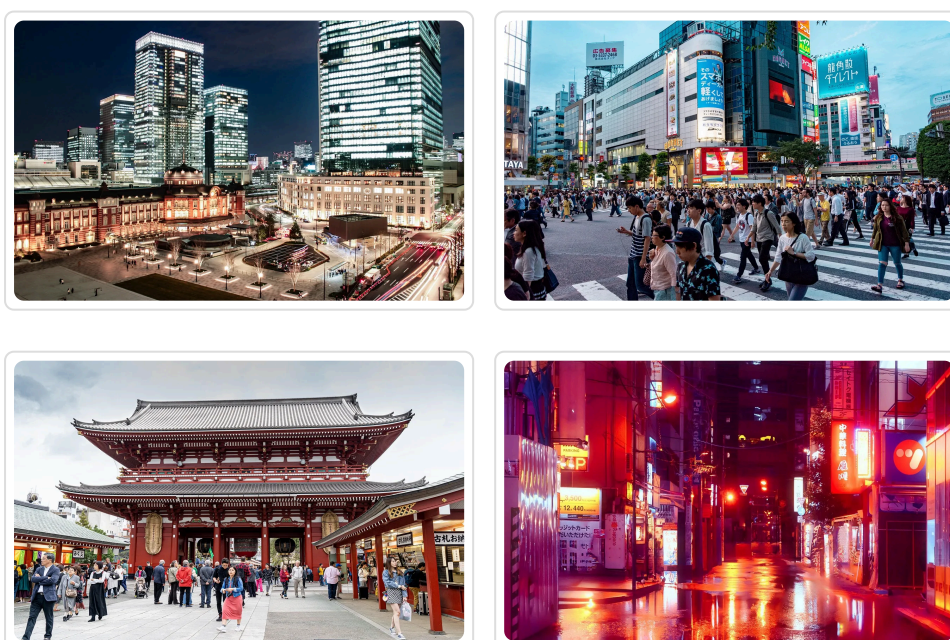
Relax and enjoy a delicious Japanese lunch featuring local flavors, giving you the energy to continue your sightseeing journey.

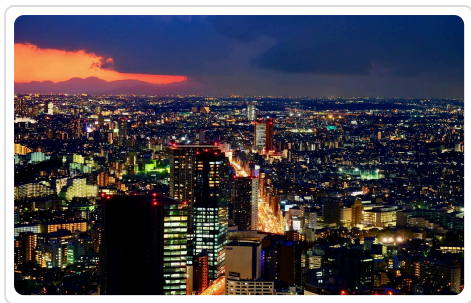
Asakusa Kannon Temple & Nakamise Shopping Street

Discover Tokyo's oldest temple, Senso-ji, in Asakusa. Stroll along the lively Nakamise Street lined with traditional snacks, souvenirs, and cultural charm.

Tokyo Skytree Tembo Deck

End your day with breathtaking city views from Tokyo Skytree, Japan's tallest tower. The observation deck offers panoramic sights stretching across Tokyo and even Mount Fuji on clear days.





13 Nov, 25

Day 3

Mt Fuji, Hakone, 1 Day Bus Trip from Tokyo

Lake Ashi & Sea Torii Gate

Enjoy the stunning views of Mount Fuji reflected on the peaceful waters of Lake Ashi. The iconic red torii gate rising from the lake makes for one of Japan's most picturesque scenes.

Hakone Shrine

Nestled at the foot of Mount Hakone and surrounded by towering cedars, Hakone Shrine is a sacred spot offering serenity and spiritual charm. Its torii gate by the lake is a symbol of peace and good fortune.

Hakone Pirate Ship Cruise

Set sail across Lake Ashi on a themed pirate ship while admiring panoramic mountain views. This scenic cruise offers a fun and unique way to explore Hakone's natural beauty.

Hakone Ropeway

Take an aerial ride above the mountains and valleys on the Hakone Ropeway. Enjoy breathtaking views of Mount Fuji, Owakudani's volcanic landscape, and the shimmering Lake Ashi below.

Owakudani Valley

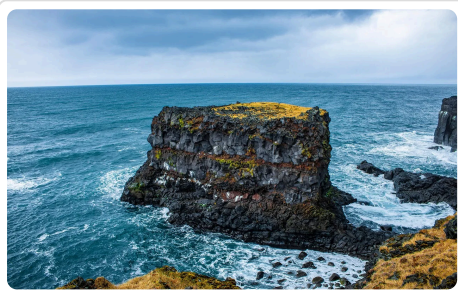
Known as the "Valley of Hell," Owakudani is a volcanic area with steaming vents and sulfur springs. Try the famous black eggs boiled in hot springs—said to add years to your life!

Yamanakako Lake

The largest of the Fuji Five Lakes, Yamanakako offers incredible views of Mount Fuji's reflection on calm waters. It's a peaceful retreat for nature lovers and photographers alike.

Oshino Hakkai

Visit this charming village with eight crystal-clear ponds fed by Mount Fuji's melted snow. The traditional thatched-roof houses and pure spring water create a picture-perfect Japanese countryside scene.



14 Nov, 25

Day 4

Day free at leisure or shopping

Enjoy a relaxing day in Tokyo at your own pace. Spend time exploring the city's vibrant shopping districts such as **Ginza**, **Shibuya**, and **Harajuku**, known for their mix of luxury brands, trendy boutiques, and unique local finds. Alternatively, unwind at a café, visit nearby attractions, or simply take in the lively atmosphere of Japan's dynamic capital.



15 Nov, 25

Day 5

Tokyo to Kyoto via Bullet Train

Travel swiftly and comfortably from Tokyo to Kyoto on the **iconic Shinkansen**, enjoying scenic views along the way. This high-speed train offers a fast, convenient, and quintessentially Japanese travel experience. Drop to Kyoto hotel



16 Nov, 25

Day 6

A day in Kyoto with full day tour

Full day Kyoto bus tour

Kiyomizu-dera Temple – A UNESCO World Heritage site famous for its wooden stage overlooking Kyoto, offering panoramic city and seasonal views.

Sanjusangendo Temple – Renowned for its long hall housing 1,001 life-sized statues of Kannon, the goddess of mercy — an awe-inspiring sight of devotion and artistry.

Arashiyama – A scenic district on Kyoto's western edge, known for its natural beauty, historic temples, and the iconic Togetsukyo Bridge.

The Bamboo Forest Trail – A peaceful walkway through towering bamboo groves in Arashiyama, offering one of Kyoto's most photographed and tranquil scenes.

Tenryu-ji Temple – A Zen temple and UNESCO World Heritage site, famous for its exquisite garden and scenic views of the Arashiyama mountains.

Kinkaku-ji Temple (Golden Pavilion) – One of Kyoto's most iconic landmarks, covered in gold leaf and reflecting beautifully in the surrounding pond.

Fushimi Inari-taisha Shrine – Famous for its thousands of bright red torii gates leading up Mount Inari, symbolizing good fortune and prosperity.



17 Nov, 25

Day 7

Osaka and Nara day trip and check out from Kyoto

Check out from your hotel in Kyoto and travel to Nara and Osaka for a day of cultural and historical exploration.

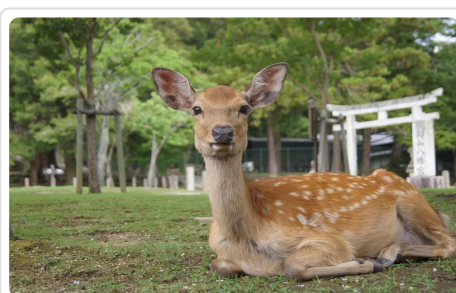
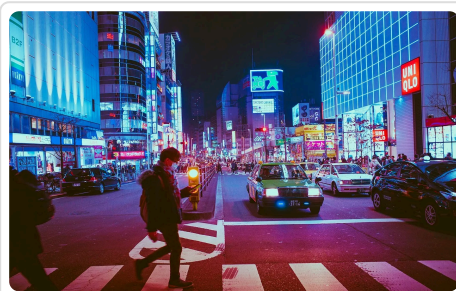
Nara Deer Park – Stroll among friendly, free-roaming deer in this scenic park, a symbol of Nara's ancient heritage.

Tōdai-ji Temple – Visit the world-famous temple housing the Great Buddha (Daibutsu), an impressive example of Japan's Buddhist architecture.

Osaka Castle – Explore this iconic landmark, surrounded by scenic gardens and a symbol of Osaka's rich history.

Dotonbori – Conclude the day at Osaka's vibrant entertainment district, famous for its neon lights, street food, and bustling atmosphere.

Drop to hotel in Osaka



18 Nov, 25

Day 8

Shopping in Osaka by your own

Enjoy a free day to explore Osaka's bustling shopping districts at your own pace. Visit **Shinsaibashi Shopping Arcade** and **Dotonbori** for fashion, souvenirs, and local street food, or explore **Umeda** for modern malls and department stores. This is the perfect opportunity to shop, wander, and soak in the vibrant atmosphere of Osaka.

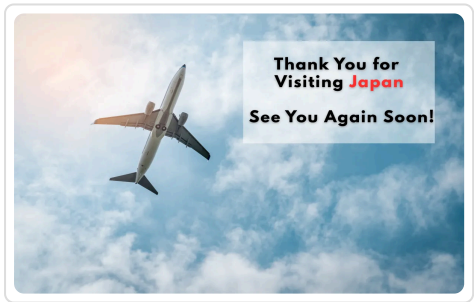


19 Nov, 25

Day 9

Departure Day!!

After breakfast, check out from the hotel and proceed to the airport for your onward journey. Bid farewell to Japan with wonderful memories of your trip and experiences that will last a lifetime.



Trip Information & Documents

Terms & Condition

Inclusions:

Transportation	Private or SIC Vehicle wherever mentioned
Coordinator/Guide	English speaking driver cum guide
Hotel	3* hotels as mentioned or similar
Meal	Breakfast – 8
Room	Double /Twin rooms

Entrance
Bullet Train

All Included as per the itinerary
Tokyo-Kyoto

Exclusions

- Any Gratuities
- Any Meals other than mentioned in itinerary
- Camera charges, water bottle or any expense of personal nature
- Pick up and drop not included for SIC tours
- Any transfer other than specified above
- Travel Insurance, Any Tips

Cancellation Policy

For Hotels Booking

Hotel rates are subject to a cancellation fee of 20% to 30% or higher, in accordance with the hotel's policy, once the tour booking is confirmed.

Tour Package Cancellation Policy

Tour Confirmed Date to 30 Days prior to Travel Date	15%	of Total amount of tour package
30-21 Days prior to Travel date	30%	of Total amount of tour package
21-10 Days prior to travel date	40%	of Total amount of tour package
10-7 Days prior to travel date	50%	of Total amount of tour package
6 Days prior to travel date	100%	of Total amount of tour package

Hotels : We will provide hotels as per the below list

(incase of any particular hotel requested by agent/client, the rates may change)

Tokyo

3*

Toyoko Inn hotels
APA Hotel Sugamo Ekimae
Super Hotel Tokyo Otsuka/
Smile Hotel Asakusa/
Hotel Wing International Tokyo Akabane/ similar

Kyoto

3*

APA Hotels

EN HOTEL Kyoto/

APA HOTEL KYŌTO-EKIMAE/

Daiwa Roynet Hotel Kyoto Ekimae PREMIER/similar

Osaka

3*

Toyoko Inn hotels

Comfort Hotel Shin-Osaka

Hotel Links Namba/

Hotel Hillarys/

Smile Hotel Shin-Osaka/ similar